



**PHI BETA KAPPA**  
 NORTHERN CALIFORNIA ASSOCIATION  
 THE GAMMA ASSOCIATION OF CALIFORNIA

Association Chartered June 14, 1946

Visit us on the web at [www.pbknca.org/](http://www.pbknca.org/)

Φιλοσοφία Βίου Κυβερνήτης

SALUS PATRIAE

Founded December 5, 1776

**December 2015**



[www.pbknca.org/renew](http://www.pbknca.org/renew)

**From the President**



As the holiday season fills our lives with remembrances of the year past and hopes for the year to come, I wish each of you joy in your celebrations and happiness in the new year.. ΦBKNCA looks forward to your membership again in 2016.

**Use the enclosed envelope to renew your membership in the ΦBK Association now.** All memberships expire Dec.

31, so this is the last newsletter you will receive unless you renewed in October or November! **Prefer to pay on line?** Go to <http://www.pbknca.org/renew> or scan the QR code above with your Smartphone to remit *via* PayPal or credit card. Lost the envelope? **A form that you can print** and mail with your check is available at <http://www.pbknca.org/mail.in.html>

Many thanks for supporting the Association!

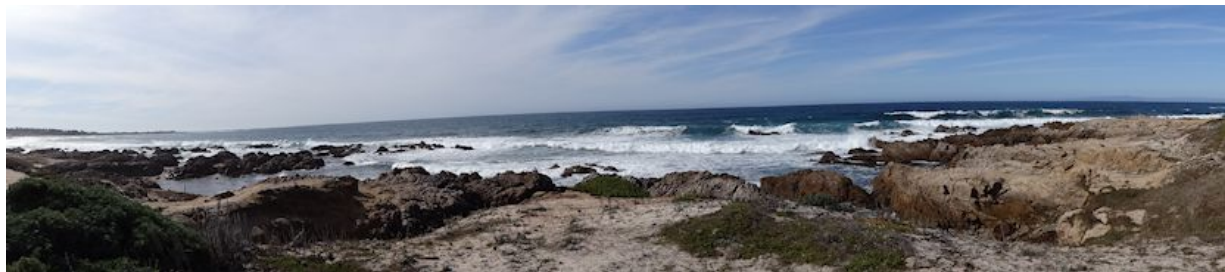
*Continued on page 6*

Click links to navigate	
<a href="#">Asilomar.....</a>	<b>1</b>
<a href="#">Asilomar Coupon.....</a>	<b>8</b>
<a href="#">Awards.....</a>	<b>2</b>
<a href="#">Events.....</a>	<b>2</b>
<a href="#">Event Coupons.....</a>	<b>7</b>
<a href="#">Financial Report.....</a>	<b>7</b>
<a href="#">Online Newsletter Available.....</a>	<b>7</b>
<a href="#">PBKNCA Board.....</a>	<b>7</b>
<a href="#">President's letter.....</a>	<b>1</b>

**Don't Miss the 30th Asilomar Conference, February 12-15, 2016**

**Deadline December 15, 2015**

See [www.pbknca.org](http://www.pbknca.org) for up-to-date information and speakers' bios



*“A faithful study of liberal arts humanizes character, and allows it not to be cruel.” -- Ovid*

Spring is on the horizon, and with it our annual Asilomar adventure! This year's conference will explore a full array of cultural expressions – international learning, literature, marine biology, opera, neuropsychology, philosophy, world politics, and modern design. Once again we are fortunate to host outstanding speakers, including several of international stature – as well as two of our own 2015 scholarship awardees.

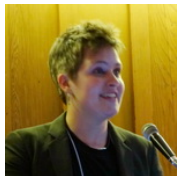
*Continued on page 4*

## Your Contributions at Work! Scholarship Awards, May 5, 2015

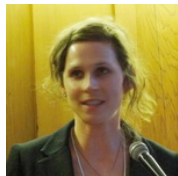
Elizabeth Browning wasn't able to attend the Annual meeting, but she sent the following letter to Joanne Sandstrom, Committee Chair:

*I want to send my sincere thanks to you and the Phi Beta Kappa Northern California Association Graduate Scholarship Committee. I am grateful for the generous support that I received as a scholarship recipient this past spring--it has proven invaluable as I research and write my dissertation in U.S. urban environmental history. Many thanks again for your generosity.*

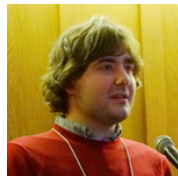
*Sincerely, Lizzie Grenman Browning*



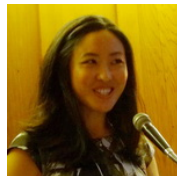
Colette DeJong, UC San Francisco, Medicine



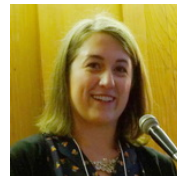
Rebecca Elliott, UC Berkeley, Sociology



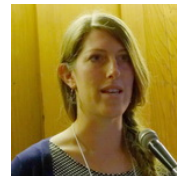
‡ Marius Cătălin Jordan, Stanford, Computer Science



Cheri Mah, UC San Francisco, M.D.



\*Stephanie Redmond, UC San Francisco, Neuroscience



|| Justine Smith, UC Santa Cruz, Environmental Studies

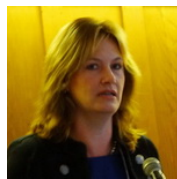
Not present: Elizabeth Browning, UC Davis, History; Danielle Glynn, UC Santa Cruz, Ocean Sciences; Karen Lloyd, UC San Francisco, Medical Sociology; Derin McLeod, UC Berkeley, Classics; § Elise Stickles, UC Berkeley, Linguistics (Gilliland Grant); Bryan Yazell, UC Davis, English

\* E. B. Reed Scholarship  
§ M. T. and C. Gilliland Scholarship Grant

‡ W. and A. Hendess Scholarship  
|| Norall Family Scholarship Grant

Learn more about the awardees at [www.pbknca.org/scholarship/scholarship.winners.2015.phi.beta.kappa.pbk.php](http://www.pbknca.org/scholarship/scholarship.winners.2015.phi.beta.kappa.pbk.php)  
Scholarship Committee members: Joanne Sandstrom (Chair), Jeff Fenton, Lynne Fovinci, Jean James, Gerry Richards

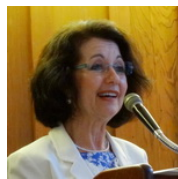
## Teaching Excellence Awards, May 5, 2015



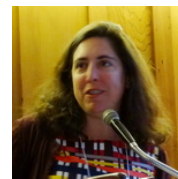
Petra Dierkes-Thrun, Comparative Literature, Stanford University

Not able to attend

Emily Gottreich, Department of Middle Eastern Studies, University of California, Berkeley



Margherita Heyer-Caput, Department of French and Italian, University of California, Davis



Victoria C. Plaut, School of Law, University of California, Berkeley

Learn more about the awardees at [www.pbknca.org/teaching/teaching.winners.phi.beta.kappa.pbk.php](http://www.pbknca.org/teaching/teaching.winners.phi.beta.kappa.pbk.php)  
Teaching Excellence Committee Members: Narcinda Lerner (Chair), Kimberly Aguilar, Alina Fortson, Melissa Getz, Douglas Minnis

**Upcoming Events – More information and clickable links are at [www.pbknca.org](http://www.pbknca.org)**

**B**e sure to read this important information about our enrollment, refund and cancellation policies. If you cannot attend an event for which you have a reservation, please contact Jon Strolle at (831) 917-2509; other members may be waiting. If you call in advance refunds may be available unless ΦBKNCA will lose scholarship

money — that is, unless we are financially committed, based on your enrollment, to an organization at which the event will be held. We are most grateful to those who prefer to donate the program fee to the scholarship program in lieu of a refund. Members who just “don’t show up” will not receive a refund. Most events can accommodate you and any friends or family you’d like to bring along. Occasionally an event will have a limited enrollment, in which case we may not be able to accommodate more than one member and one guest per enrollment. You will not receive written confirmation of your reservation for the events. Directions are available from the event websites, Google.com, your GPS, or on the day of the event, by calling Jon at (831) 917-2509.

*Jon Strolle, 1<sup>st</sup> Vice President, Programs*

### **Friday, January 8, 2016, The Esterházy Quartet**



Enjoy the sounds of Early Music from the Middle Ages through Late Classical in this thrilling new series featuring some of the hottest period-instrument ensembles in the

Bay Area. Experience classical like you’ve rarely heard or seen before in the close-up, intimate theater setting with lush acoustics.

**Website:** <https://www.rhythmix.org/events/new-esterhazy-quartet.html>

**Date:** January 8, 2016

**Deadline:** December 15, 2015

**Time:** 8 pm

**Minimum/Maximum:** 10-20

**Cost:** \$30 Subscribers receive preferred seating in a special subscriber section.

**Where:** Rhythmix Cultural Works, 2513 Blanding Ave, Alameda

**Directions:**

See map and get directions at

<https://goo.gl/maps/8BCsX1cEv7N2>

**From San Francisco:**

From the Bay Bridge take 880 South towards San Jose. Take the Fruitvale Avenue exit. Go straight off the exit and make a right at the light onto Fruitvale. Cross the Fruitvale Bridge into Alameda, make your first right onto Blanding. We are just past the Bridgeside Shopping Center at the corner of Blanding and Everett.

**From the East Bay:**

Hwy 24, I80, or 580: Take 980 South towards downtown Oakland, then follow the directions above from 880 South.

**880 North:** Take the High St. exit. Turn left on High St. and cross over the High Street Bridge. At first signal, Fernside, turn right. At next signal, Fernside turns into Blanding Avenue, 2513 will be on the right, just past the Bridgeside Shopping Center.

**Public Transportation:**

We are close to stops on AC Transit bus lines 51, 19, 63, W, O and OX. The Fruitvale Bart Station is a 10 minute bike ride

### **30th Asilomar Conference, February 12-15, 2016**

Deadline December 15, 2015. See information on [page 1](#) and sign-up form on [page 8](#).

### **Friday, March 11, 2016, Elephant Seal guided tour, in Año Nuevo State Park**



These popular three mile walks over rolling sand dunes last about three and a half hours and are considered moderately strenuous. They

operate daily, rain or shine. No cancellations. A unique feature of the Central California Coast, Año Nuevo State Park is breathtaking in every season as the elephant seals can be viewed year-round. Pups are born between December and February during the “Breeding Season.” During the spring and summer months, elephant seals come ashore to shed their fur during the “Molting Season.” Each fall, yearling seals “hang out” on the beaches during the “Fall Haul-Out Season.” Dec-Mar Access limited to guided walks only.

A Natural Preserve is designated at Año Nuevo Point to provide wildlife viewing opportunities and minimize disturbance to the animals in their natural habitat.

**Website:** [http://www.parks.ca.gov/?page\\_id=523](http://www.parks.ca.gov/?page_id=523)

**Availability will be confirmed 56 days prior to the event per their reservation system rules. If you are interested, please sign up now, checks will be held until we can confirm our visit then they will either be cashed (if it is a “go”) or returned to you (if it is a “no go”).**

**Date:** Friday, March 11, 2016

**Deadline:** February 20, 2016

**Time:** 11:00 am

**Minimum/Maximum:** 10-15

**Cost:** \$15. There will also be a \$10 per car parking fee, payable at the gate. Carpooling suggested. Contact Jon Strolle in early March for names of those in your area.

**Directions:** The Park is about 20 miles north of Santa Cruz on Hwy 1. Map and directions, see

<https://goo.gl/maps/CnkgufAriqN2>

Meet at the Park entrance.



### **Friday, April 8, 2016, Fremont Patterson House**

The 16 room Victorian-era Queen Anne mansion is seated on 205 acres in the heart of Silicon Valley. Filled with original furnishings, it is operated as a museum offering a

multitude of events and programming for the community. The earliest parts of the house date to approximately 1857. The original house was a relatively simple, with only 5 rooms; a parlor, a dining room, two bedrooms upstairs, with a shed style addition containing the kitchen on the rear of the building. It is still a part of the Queen Anne addition!

In 1889 George and Clara Patterson, after 12 years of marriage, added the grand Queen Anne addition. The addition was spectacular, and featured all of the elements which identify a building as a Queen Anne, including the tower, the interesting variety of windows, and the mix of shingles, siding and carvings. The entrance arch design was repeated in the interior.

**Website:** <http://www.fremont.gov/293/The-Patterson-House-Ardenwood-Historic-F>

**Date:** Friday, April 8, 2016

**Deadline:** March 15, 2016

**Time:** 1:30 pm

**Minimum:** 10, **Maximum:** 15

**Cost:** \$20

**Location:** 34600 Ardenwood Blvd., Fremont (Off highway 84 near 880)

**Directions:** Map and directions available at <https://goo.gl/maps/qjiGx3VRvQt>

## **Asilomar – Continued from page 1**

Whether February brings glorious spring days or – as we all hope – abundant rains, this year’s event offers the ideal escape for fellowship, relaxation and especially learning, all within the beautiful environs of historic Asilomar State Park. Please join us in renewing old friendships and initiating new ones in a location of exceptional peace and beauty. We are glad to welcome Phi Betes young and old, as well as their family and friends, to what promises to be an inspiring, relaxing and invigorating event.

*Deirdre Frontczak, Asilomar Chair*

**Program Preview (subject to change) See [www.pbknca.org](http://www.pbknca.org) for up-to-date information and speakers’ bios**

### **Friday, 7:45 pm: Dr. Mary Albert, Marine Biology**

*The Great Tidepool: The Story of Ed Ricketts’ Scientific System*

The documentary film *The Great Tidepool* uncovers the pioneering scientific system of Edward Flanders Ricketts, the renowned Californian marine biologist who in the 1930s wrote the world’s most famous and influential seashore guidebook – *Between Pacific Tides*. Based on their research centered on the

Ricketts collection at Stanford University Library, Steven and Mary Albert piece together Ricketts’ own explanation of his groundbreaking ecological scientific system.

### **Saturday, 9:30 am: Christine Schulz, J.D.**

*World Fluency: A Critical Skill for the 21st Century*

The integration of capital, technology and information across national boundaries has forced globalization and impacted every career path in

today's world. A globally focused curriculum, including world languages, is not a luxury but a necessity for our nation's schools beginning in the elementary grades. Four key points support a comprehensive educational framework with world fluency at the core: international business; national security; better scores and better students; and responsible, global citizenship. In a "world café" format, participants will explore some of the opportunities and obstacles for ensuring that our nation's youth have the requisite skills for success in the 21<sup>st</sup> century.

**Saturday, 1:30 pm: Cheri Mah, M.S., biology and cognition, UCSF, (2015 ΦBK scholarship awardee)**  
*Sleep! Who Needs It?*

Cheri Mah, PBKNCA 2015 Scholarship Awardee, is a sleep research fellow at UCSF Human Performance Center and UCSF Sports Medicine. Her fascination with sleep in athletes began in her first year at Stanford, in 2002. A double major in psychology and biology, she noticed several collegiate swimmers who walked into the lab grinning, having set multiple personal records while on a schedule to eliminate accumulated sleep debt. This particular study was designed to examine cognitive performance -- but their success begged the question: Does getting extra sleep also elevate your game?

In this talk Cheri shares her research on the relationship between sleep and performance in elite athletes, including work with Olympians and professional sports teams.

**Saturday, 7:30 pm: Dr. Bill Beeman, anthropology, University of Minnesota, *The Meistersingers: Opera Performance in Germany***

A noted cultural anthropologist, Bill Beeman has written extensively on music and performance traditions both in Western and non-Western traditions. His forthcoming book: *The Meistersingers: Opera Performance in Germany* centers on his experience as an opera performer in a leading German opera house. In this

talk, he will share this personal experience, and explore some of the differences in musical performance of western and middle-eastern traditions.

**Sunday, 9:30 am: Dr. Bill Beeman**  
*The U.S. and Iran: So, What's Next?*

A man of many talents, Bill Beeman is best known as a leading expert on Middle Eastern affairs. In response to queries about his take on the tenuous "peace" between the U.S. and Iran, Bill has offered to hold an informal lecture / discussion on Sunday morning to explore the history and traditions of Iran, how they influence present-day tensions, and what likely developments might now unfold.

**Sunday, 1:30 pm: Bryan Yazell, Ph.D. Candidate, Literature, U.C. Davis, (2015 ΦBK scholarship awardee)**  
*John Steinbeck and Migrant Labor Policy*

We know that society is magnified in literature – but does literature also shape social values and norms? This talk explores the role of John Steinbeck's iconic fictional migrant family from *The Grapes of Wrath* in the development of 1930s New Deal welfare policy, which addressed poverty and homelessness on a national scale. Together, we will examine the ways that Steinbeck's novel and his nonfiction work have contributed to a revision in public view of migrant labor, with impacts that extend to the present day.

Bryan is a Ph.D. candidate and lecturer in English at the University of California, Davis, where he expects to complete his degree this spring.

**Sunday, 7:30 pm: Mark Burstein, writer / editor**  
**President emeritus of the Lewis Carroll Society of North America**  
*What IS It about Alice?*

This year marks the sesquicentennial anniversary of *Alice's Adventures in Wonderland*, a phenomenally popular and influential book, the most quoted and widely illustrated novel ever written. But what is it about *Alice* that makes it so? In a lavishly illustrated

talk, writer and editor Mark Burstein discusses the phenomenon of this “children’s book” that has claimed the attention of adults for a century and a half, with digressions into its adaptations, academia, globalization, the life of Mr. Dodgson and his muse, and his own life in and out of Wonderland, before attempting to answer the question.

**Monday, 9:30 am: Llisa Demetrios, sculpture and design, board member of the Eames Foundation and archivist and registrar of the Eames Collection**

*Charles and Ray Eames: A Family Legacy*

Best known for their “mid-century modern” furniture designs, Charles and Ray Eames epitomized the modern era. They believed in the honest use of materials in their furniture, films, and architecture. “We wanted to make the best for the most for the least.” Their hands-on, learning-by-doing process explored the possibilities of materials new and old, like fiberglass, aluminum, wire, plastic, and molded plywood. They never delegated understanding, doing iteration upon iteration of scale models to hone an idea. Llisa explores her experience of growing up with this great design team, and how they have shaped her work as a third-generation sculptor.

---

If you have questions on registration or logistics, please contact Barry Haskell at [bghaskell@comcast.net](mailto:bghaskell@comcast.net). All registered participants will receive information about how to reserve their Asilomar accommodations after we receive their deposit; please watch your email for more details.

Registration is \$125 per person paid directly to ΦBKNCA (mostly tax-deductible, it covers our conference expenses and boosts our scholarship fund). Housing and meals for the three nights and four days are handled separately by Asilomar (approximately \$550 per person, double occupancy. Includes room/meals/parking/fees). We will send you that information when you register. Sign up now. Send your deposit along with the form from page 8 (or get the form online at <http://www.pbknca.org/association/coupons/Asilomar.pdf>). For more details, watch the website, or contact Deirdre Frontczak, Asilomar Chair, 707-546-4238, [dfrontczak@santarosa.edu](mailto:dfrontczak@santarosa.edu). *Deirdre Frontczak, Asilomar Chair*

**From the President - Continued from page 1**

If you are a 2015 graduate or inductee from one of the eight Northern California colleges which have a Phi Beta Kappa chapter – Mills College, Santa Clara University, San Francisco State University, Stanford University, the Universities of California at Berkeley, Davis, and Santa Cruz, and University of the Pacific - you receive a free membership for a year and won’t need to renew until November 2016.

Every membership contribution is totally tax-deductible. Your generosity enables us to fund Graduate Student scholarships and Teaching Excellence awards, presented at our Annual Dinner in May. We do NOT receive any funds from the Phi Beta Kappa Society in Washington, D.C., and a donation to them does not confer membership in our Association.

As an active (dues-paying or first-year-free) member, you’ll be able to enjoy monthly activities in various sites around the Bay Area. First Vice President -Programs Jon Stolle has a wonderful array of excursions, theater performances, and behind-the-scenes visits planned. You’ll meet other ΦBKNCA members and discover hidden treasures in our own backyard. Join us over Presidents’ Weekend (February 12-15, 2016) at the beautiful Asilomar Conference Grounds in Pacific Grove for our annual retreat weekend. Deirdre Frontczak is rounding up an remarkable panoply of speakers to educate and entertain us. Information about signing up for activities, and their costs, may be found on page 1 of this newsletter and on our website: [www.asilomar.pbknca.org](http://www.asilomar.pbknca.org).

We also are recruiting volunteers for various Board positions. If you are interested in giving of your time to our Association, please contact a member of the Nominating Committee or myself. Time commitments can be as little as one day (Audit Committee, or being host at an activity) to as many hours as you are able to give. All positions are rewarding and all

volunteers are appreciated. It's an opportunity to meet other dedicated members and to learn how this fine organization operates.

I look forward to meeting you at one of our activities, so I may thank you in person for supporting our Association. Our loyal members are what make ΦBKNCA a superb organization. Thank you for your generosity.

Mary Turner Gilliland, President

We passed Audit in September. Information is available here: <http://www.pbknca.org/financials/index.php>

Duncan Missimer, Treasurer

**Board and Event Coupons**

**ΦBKNCA Board July 1, 2015 to June 30, 2016**

Mary Turner Gilliland, President  
Menlo Park, (650) 321-9966, Mltg@aol.com  
Jon Strolle, First Vice President – Programs  
Marina, Cell (831) 917-2509, jstrolle@gmail.com  
Joanne Sandstrom, Second Vice President – Scholarships  
Oakland, (510) 339-1352, joannes@berkeley.edu  
Patricia Kenber, Third Vice President – Membership  
Danville, (925) 838-2296, kenber@sbcglobal.net  
Duncan Missimer, Treasurer  
Sunnyvale, (408) 368-0835, Duncan.missimer@ieee.org  
Stacey Croll, Recording Secretary  
San Ramon, (925) 355-1771, stacroll@gmail.com  
Susan Jenkins, Corresponding Secretary  
San Jose, (408) 532-6550, sjenkins4@yahoo.com  
Deirdre Frontczak, Asilomar Chair  
Santa Rosa, (707) 546-4238, dfrontczak@santarosa.edu  
Amanda Sanyal, Co-Chapter Liaison  
Campbell, (650) 520-5419, a\_derry@yahoo.com  
Luke Yancy, Jr., Co-Chapter Liaison  
East Palo Alto, (248) 227-4762, lukeyancyjr@gmail.com  
Ray Hendess, Communications Officer  
Petaluma, (707) 763-2072, Ray@pbknca.org  
Narcinda Lerner, Teaching Excellence Chair  
Woodside, (650) 851-0137, nrlernern@netscape.net

Get the newsletter online and save the Association money. Check the “Go Paperless” box on the membership form or email [online@pbknca.org](mailto:online@pbknca.org).

Elephant Seals  
March 11, 2016 11:00 am  
Deadline: February 20, 2016  
# Attending \_\_\_\_\_ x \$15.00 per person = \$ \_\_\_\_\_  
(Check payable to ΦBKNCA- Enter Seals on check)  
Member(s) \_\_\_\_\_  
Address \_\_\_\_\_  
\_\_\_\_\_  
Phone \_\_\_\_\_  
E-mail \_\_\_\_\_  
Guest name(s) \_\_\_\_\_  
Mail coupon and payment to:  
Jon Strolle, 1314 Patch Ct., Marina, CA 93933

Esterházy Quartet  
Friday, January 8, 2016 8:00 pm  
Deadline: December 15, 2015  
# Attending \_\_\_\_\_ x \$30.00 per person = \$ \_\_\_\_\_  
(Check payable to ΦBKNCA- Enter Esterházy on check)  
Member(s) \_\_\_\_\_  
Address \_\_\_\_\_  
\_\_\_\_\_  
Phone \_\_\_\_\_  
E-mail \_\_\_\_\_  
Guest name(s) \_\_\_\_\_  
Mail coupon and payment to:  
Jon Strolle, 1314 Patch Ct., Marina, CA 93933

Fremont Patterson House  
Friday, April 8, 2016 1:30 pm  
Deadline: March 15, 2016  
# Attending \_\_\_\_\_ x \$20.00 per person = \$ \_\_\_\_\_  
(Check payable to ΦBKNCA- Enter Patterson on check)  
Member(s) \_\_\_\_\_  
Address \_\_\_\_\_  
\_\_\_\_\_  
Phone \_\_\_\_\_  
E-mail \_\_\_\_\_  
Guest name(s) \_\_\_\_\_  
Mail coupon and payment to:  
Jon Strolle, 1314 Patch Ct., Marina, CA 93933

The Editor thanks Dr. Larry Lerner for proofreading this newsletter.



**PHI BETA KAPPA**  
**NORTHERN CALIFORNIA ASSOCIATION**  
 Ms. Patricia Kenber  
 VP Membership, PBKNCA  
 1073 River Rock Lane  
 Danville CA 94526-4001

**Return Service Requested**

**Membership renewal enclosed**  
**Our awards depend on you!**

*Note – Please do not return this form if you have already paid a deposit. You will be sent information on making your room/meals reservation.*

**ΦBK at Asilomar February 12-15, 2016**

Deadline for Reservations: December 15, 2015

Registration fee: # Attending \_\_\_\_\_ x \$125/person= \$\_\_\_\_\_

Please make checks payable to PBKNCA

Mail to: Barry Haskell, 1190 Fairbrook Dr., Mountain View, CA 94040

Questions? Call Deirdre Frontczak at 707 546-4238

Member Name(s): \_\_\_\_\_

Where initiated to ΦBK (For your nametag): \_\_\_\_\_

Address: \_\_\_\_\_

Phone #(s): \_\_\_\_\_

Email (essential!): \_\_\_\_\_

Guest Name(s): \_\_\_\_\_